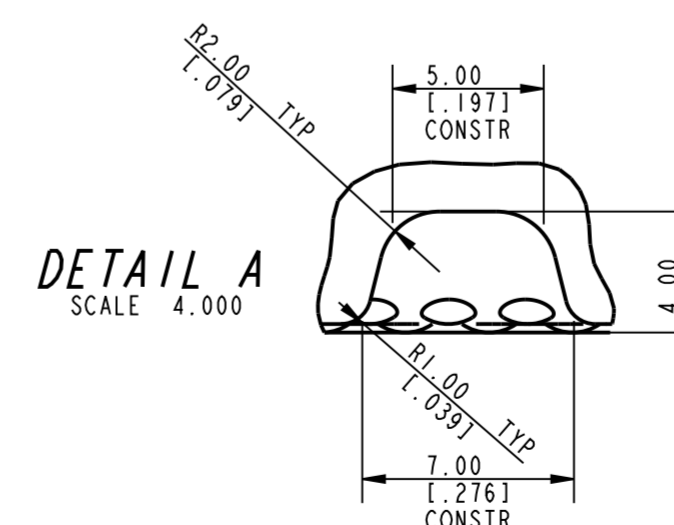
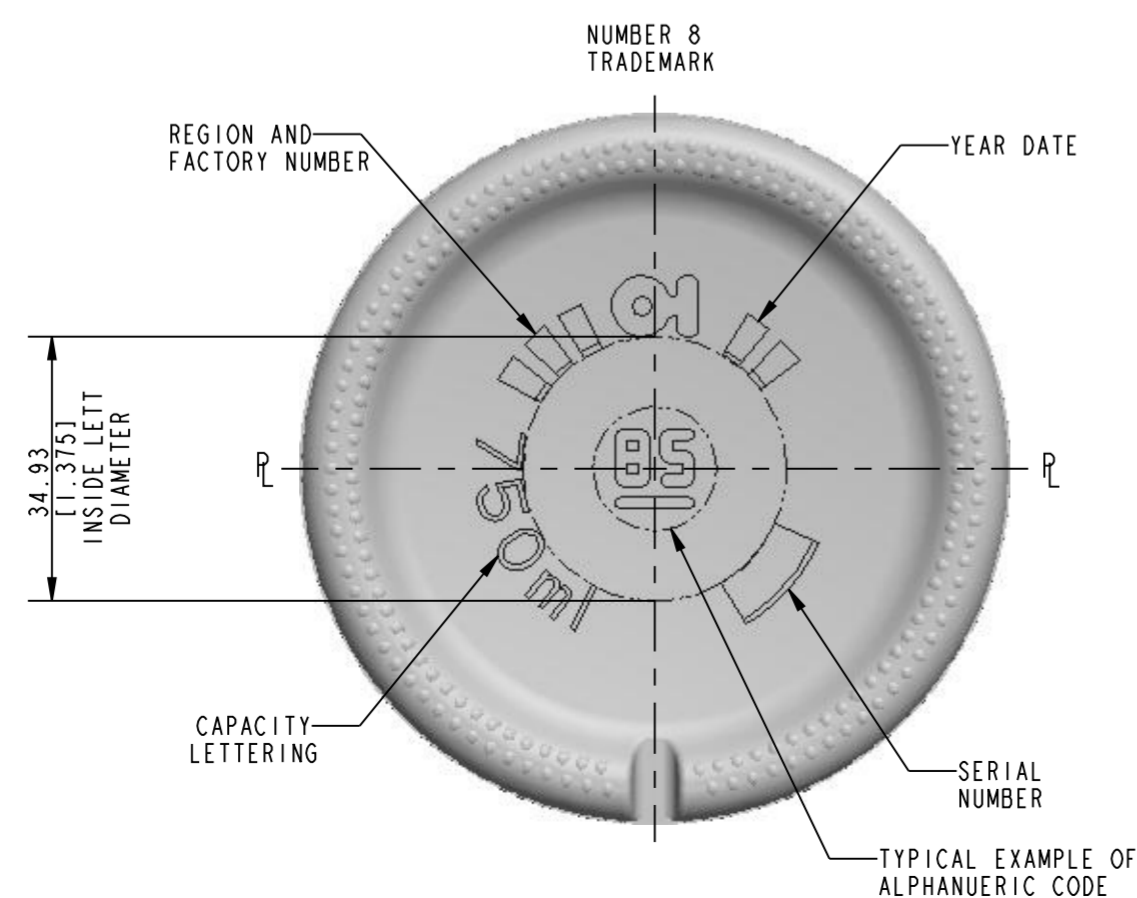
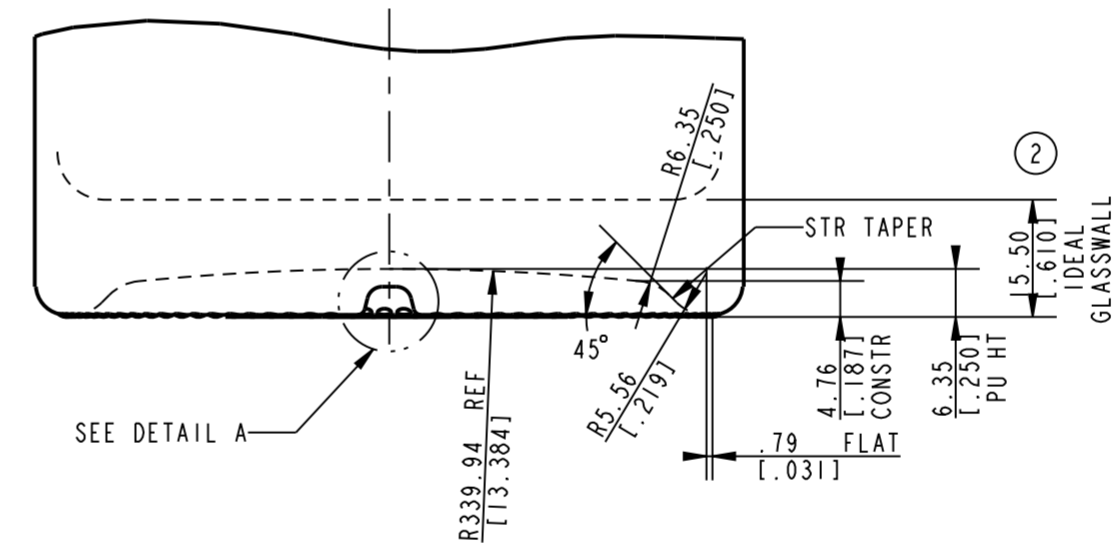
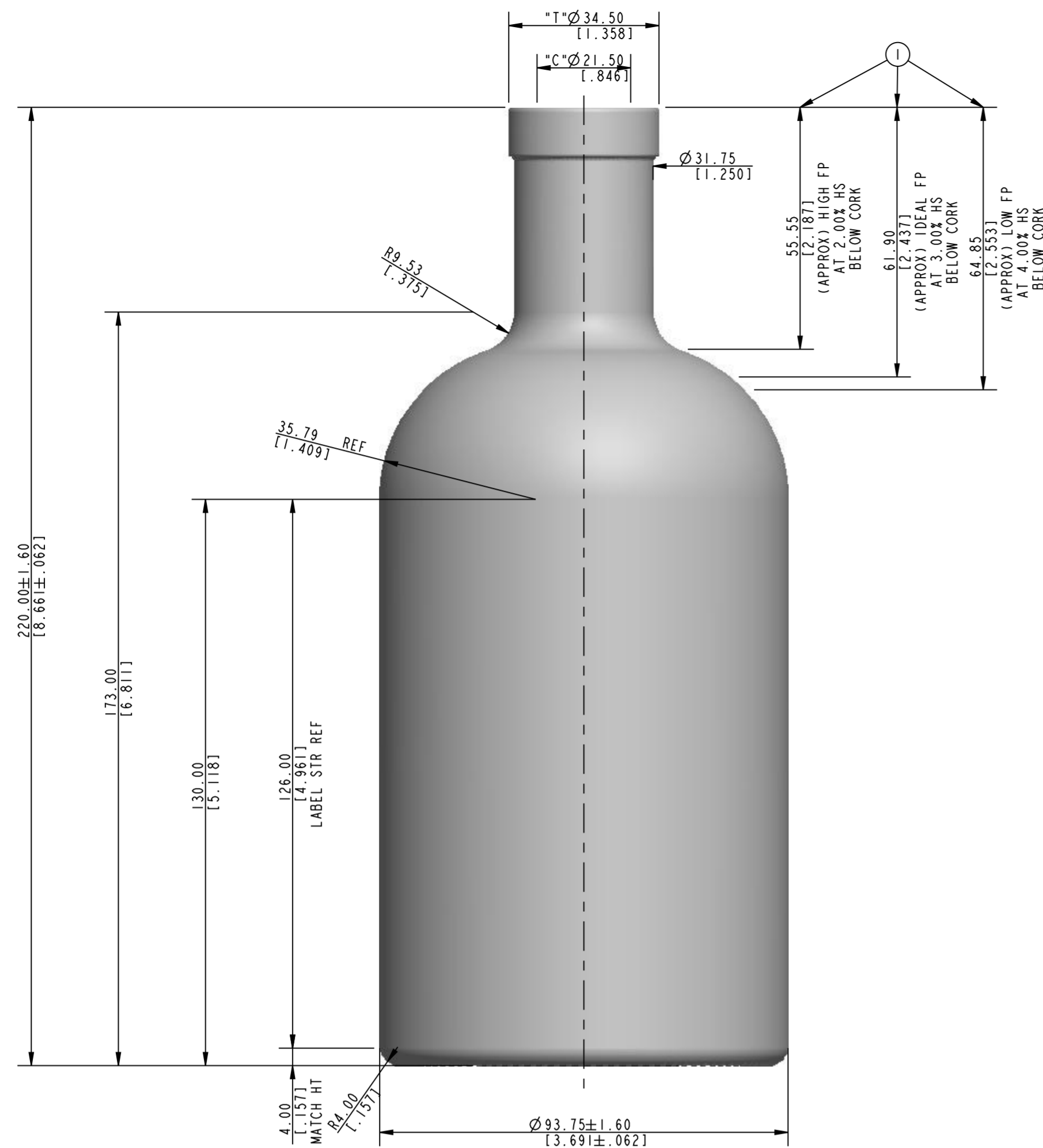


**NORTH AMERICA**

**UNITED STATES**

ONE MICHAEL OWENS WAY  
 PERRYSBURG, OHIO 43061

**PRODUCT DEVELOPMENT**



- (1) FILL POINT(S) - APPROXIMATE FILL LOCATION MAY VARY UP OR DOWN FROM THAT INDICATED.
- ALPHANUMERIC IDENTIFICATION CODE TO APPEAR ON BOTTOM PER GS-311-B.
- CAPACITY LETTERING TO APPEAR ON BOTTOM AS SHOWN, AND TO BE 6.35 [0.250] TALL.
- BOTTOM PLATE LETTERING TO BE 6.35 [0.250] TALL.
- SPOTTING LUG TO APPEAR ON BOTTOM AS SHOWN.
- BPMR-12 TO APPEAR ON BEARING SURFACE.
- (2) BOTTOM GLASSWALL THICKNESS TO HAVE FLAT APPEARANCE AND TO BE CONSISTENT FROM SIDE TO SIDE.

*SHEET 1 OF 2*

<b>CONTAINER OVERFLOW CAPACITY (BRIMFUL)</b>			
779.50 ml [26.358 FL OZ]			
<b>CONTAINER RATED CAPACITY (FILLPOINT)</b>			
750.00 ml $\pm$ 7.50 ml [25.361 FL OZ $\pm$ 0.254 FL OZ]			
<b>CONTAINER WEIGHT</b>			
775.00 g $\pm$ 28.50 g [27.337 OZ $\pm$ 1.005 OZ]			
<b>FINISH DESIGNATION</b> 034-3120-R099		<b>MAX GAS VOLUME</b> 0.0 Gas Vol	
<b>PROCESS</b> B&B	<b>RETURNABLE</b> NO	<b>DESIGN REF.</b> C-08-237	
<b>SPECIALTY STOCK</b>			
<b>750 ml KALEIDO</b>			
DESIGNER	KDC	DATE	09 MAR 09
CHECKED	JDN	DATE	25 AUG 10
<b>DRAWING NUMBER</b> LA-43533-4		<b>MOULD/SAP NUMBER</b> LS-1	

INFORMATION CONTAINED HEREIN CONSTITUTES PROPRIETARY CONFIDENTIAL INFORMATION OF OWENS-BROCKWAY GLASS CONTAINER INC. AND IS TO BE ACCEPTED ONLY SUBJECT TO THAT UNDERSTANDING. IT IS TO BE KEPT CONFIDENTIAL AND NOT TO BE COPIED, USED OR CONVEYED TO OTHERS WITHOUT OWENS-BROCKWAY GLASS CONTAINER INC WRITTEN AUTHORIZATION.

ALL LETTERING TO BE ROUND BOTTOM STYLE, RAISED IN GLASS, UNLESS OTHERWISE NOTED.  
 CAPACITY VALUES BASED ON WATER AT 20°C [68°F]  
 ALL NON TOLERANCE SIZES ARE FOR MOLD MANUFACTURE REFERENCE ONLY.

No	DATE	REVISIONS	DESIGN/CHECK
-4	25 AUG 10	REVISED PUSH UP CONSTRUCTION	SDK
-3	21 DEC 09	UPDATED DWG STDS; ADDED 033-0405-R595 SEC FINISH	SDK
-2	07 OCT 09	ADDED ALPHA TO BTM; ADDED LUG DETAIL	SDK
-1	22 APR 09	ADDED MOULD NUMBER.	JJB